

 5  3  3



# Devenish Road, *Sunningdale*

OSBORNE HEATH



# A five bedroom detached family home situated on a large south facing plot located within walking distance of Sunningdale train station and shops.

The ground floor has a living room, dining room, family room, kitchen with dining space, utility room, internal access to the double garage and a downstairs WC.

On the first floor is the principal bedroom with an en suite, a guest room with built-in wardrobes and en suite, three further bedrooms, one of which is used as a study, and a family bathroom.

Outside the property sits on a large plot with driveway parking, a double garage and gardens that wrap around the property, with the main lawn facing south.

Redwood is located in a small cul-de-sac off the Devenish road. Nearby schools include Charters Secondary School, Holy Trinity, Lambrook, The Marist, Papplewick, St Francis, St George's, St Mary's and St Michaels. Local places of interest include Ascot Racecourse, Coworth Park, Guards Polo Club, Sunningdale Golf Club, Virginia Water Lake, Wentworth Club and Windsor Great Park. The station in Sunningdale runs trains to London and Reading. Sunningdale is also convenient for the M3, M4, M25 and Heathrow Airport.

EPC rating D. Council Tax band H.









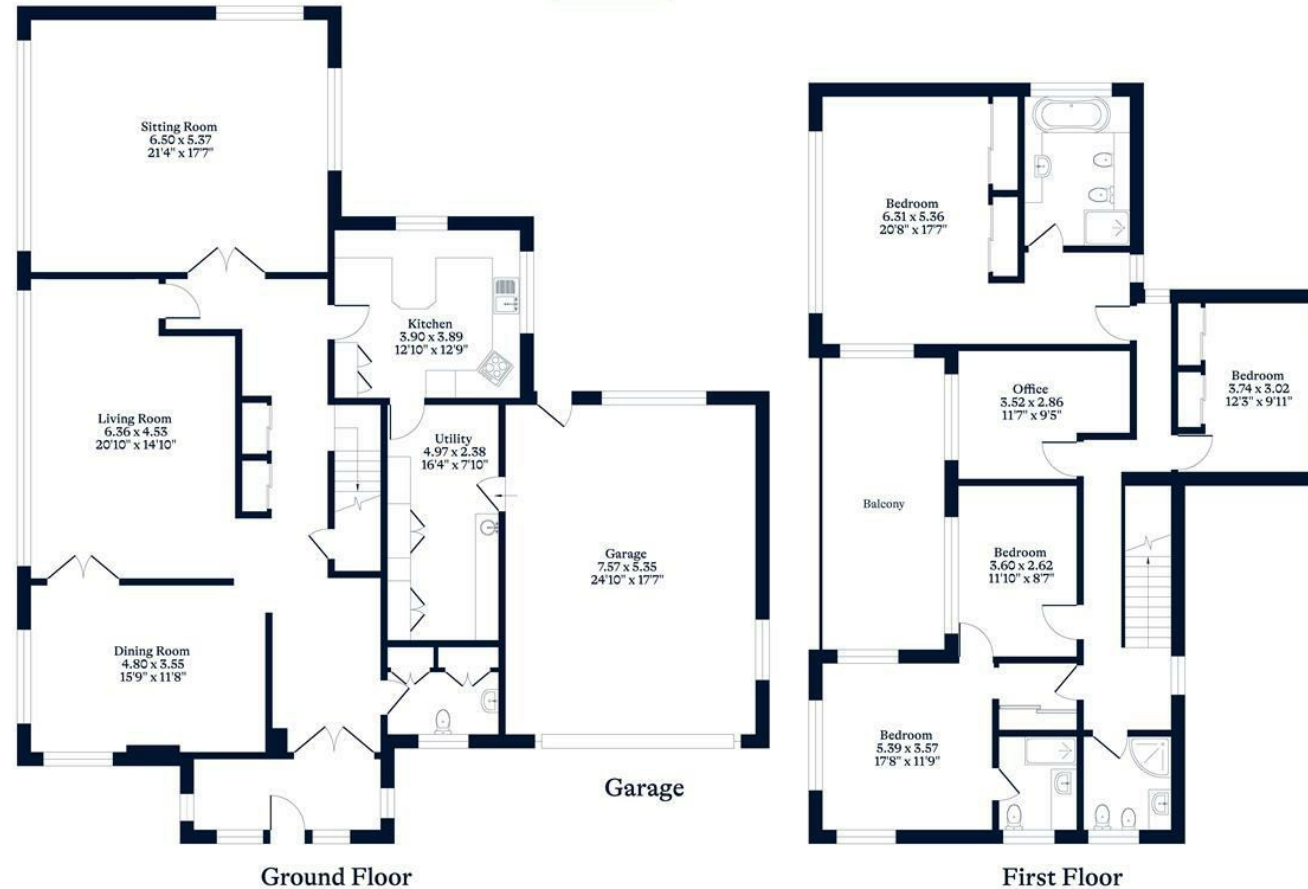
#### APPROXIMATE FLOOR AREA

House - 259.48 sq m - 2793 sq ft  
Garage - 38.90 sq m - 419 sq ft  
Total - 298.38 sq m - 3212 sq ft  
(Gross Internal Area)

OH

#### NOT TO SCALE

This plan is for illustration purposes only



OSBORNEHEATH.CO.UK

This floor plan has been created by Property Shoot Ltd following the RICS code of measuring and is for indicative guidance only. Whilst every attempt has been made to ensure the accuracy of the floor plan contained here, measurements of doors, windows and rooms are approximate and no responsibility is taken for any error, omission or misstatement. Details shown on this floorplan, including all measurements, areas and proportions cannot be guaranteed by either the provider or estate agency and should not be relied upon.

©PROPERTYSHOOT